



City of Brisbane

Public Art Advisory Committee

Monday, May 18, 2026 at 5:15 PM • Hybrid Meeting • 50 Park Place, Brisbane, CA • City Hall Conference Room

The public may observe/participate in Committee meetings using remote public comment options or by attending in person. Committee Members shall attend in person unless remote participation is permitted by law. The Committee may take action on any item listed in the agenda.

To Address the Committee

In Person:

Location: Brisbane City Hall: 50 Park Place, Brisbane, CA 94005 - City Hall Conference Room

To address the Committee on any item on or not on the posted agenda, please wait until Public Comments are being accepted.

Remote Participation:

Members of the public may observe/participate in the Committee meeting by logging into the Zoom Webinar. Public comments received one hour prior to the meeting via email will be noted for the record. Written comments after that time will not be responded to or brought to the attention of the Committee during the meeting. Email: mebrown@brisbaneca.org.

Join Zoom Webinar: zoom.us (please use the latest version: zoom.us/download)
[brisbaneca.org/pa-zoom](https://zoom.us/join/brisbaneca.org/pa-zoom)

Or open directly from the Zoom website: <https://zoom.us/join>

Meeting ID: 8656 065 0564

Call In Number: 1 (669) 900-9128

Note: Callers dial *9 to "raise hand" and dial *6 to mute/unmute.

The agenda materials may be viewed online at brisbaneca.org at least 24 hours prior to a Special Meeting, and at least 72 hours prior to a Regular Meeting. Archived videos can be replayed on the City's website, brisbaneca.org/meetings.

Special Assistance:

If you need special assistance to participate in this meeting, please contact Mollie Brown at (415) 218-1348. Notification in advance of the meeting will enable the City to make reasonable arrangements to ensure accessibility to this meeting.

Committee Members

Call to Order

- A. Consider any request of a Committee Member to attend the meeting remotely under the "Emergency

Roll Call

Adoption of the Agenda

Approval of the Minutes

- B. Approve Minutes of April 23, 2026 Meeting

Discussion Items

- C. Review of Public Art Fund Balance Report
- D. Tulare to Santa Clara Stairway Project
- E. Appoint Representative for Beautification of City-Owned Property Subcommittee

Public Comment

- F. *Time for public comment for items not on the agenda*

Next Meeting

- G. Monday, June 15th 2026 5:15 pm

Adjournment



CITY of BRISBANE

Public Art Advisory Committee Minutes

Monday, April 23rd, 2026 at 5:15PM • Hybrid Meeting

CALL TO ORDER – 5:15 p.m.

ROLL CALL

Committee Members Present: Chair Diane Glazman, Mayor Pro-tem Davis, Councilmember O’Connell, Committee Member Kellstedt, Committee Member Salmon

Committee Members Absent: Vice Chair Park & Recreation Commissioner Seawell

Staff Members Present: Park & Recreation Director Leek, Deputy Clerk Ibarra

A. Consider any request of a City Councilmember to attend the meeting remotely under the “Emergency Circumstances” of AB 2449

None

APPROVAL OF AGENDA

Approved by Salmon, seconded by Kellstedt. 6 Ayes, 0 No’s, 1 Absent (Seawell)

APPROVAL OF MINUTES

B. Approve Minutes from March 16th, 2026 Public Art Advisory Committee

Approved by O’Connell, seconded by Salmon. 4 Ayes, 0 No’s, 2 Abstain (Glazman, Sims), 1 Absent (Seawell)

PUBLIC COMMENT

No comments received.

DISCUSSION ITEMS

C. Receive Update from Kiernan Graves Regarding the Midtown Mural

The Committee received an update from Kiernan Graves regarding the Midtown Mural. The update included progress on efforts to protect the mural. The current treatment testing that occurred in February is holding up well. The difficulty is that the new product from the University of Florence Italy (to remove the added materials in 2022) is slow to obtain and the swaths are small for such a large mural.

Potential options for protecting the mural are: removal of added materials; deciding how to repair old damage with lasting effect (no known conservation grade coating/adhesive materials can withstand the environmental conditions presently); or potentially add infrastructure options for shading the mural. Also, as the muralist, Mona Caron, is relocating to Switzerland, restoration inpainting needed will be done by conservators, though that is common when the artist is not available.

Estimated costs associated with its completion and ongoing maintenance will be around \$50K-\$65K in the next few years, and then continuously every XX number of years (unknown timeline as of date).

D. Appoint a Representative to be Part of a David Schooley Acknowledgment ad hoc Subcommittee

The City Council has expressed a desire to honor David Schooley for his contributions to San Bruno Mountain and his work in environmental stewardship. The Committee was asked to appoint one representative to serve on an ad hoc subcommittee, and Danielle Kellstedt was selected.

E. Receive and Discuss Results from the Artful Bench Community Voting Process and Formally Select Artists to Recommend to City Council

The Committee also reviewed the results of the Artful Bench community voting process and discussed recommendations for preferred artists at each location, including the option for multiple artists at the marina site. The Committee ultimately aligned with the public's majority vote for the dog park location, selecting Alexis Gregg, and for the Marina location, selecting Chris Granillo. For the Mission Blue location, where the results were closely split, the Committee selected Spitler & Heilweil.

Staff will work with each of the artists on their contracts and present to Council in May/June. Once the selected artists are approved by Council and under contract with the City, they will meet with the Public Art Committee to finalize designs for their designated location(s).

F. Acknowledgment of the Outgoing Committee Members

The Committee acknowledged the outgoing committee members and thanked them for their dedication and service – Madison Davis, Terry O'Connell, Tom Seawell and Julie Sims.

PUBLIC COMMENT

No public or written comments received.

NEXT MEETING DATE

Monday, May 18th at 5:15pm

ADJOURNMENT

5:55 PM

Public Art Fund Activity

(Fund 275)



Date	Amount	Description	Income	Charges	Vendor
12/31/2025	2,718,561.31	Beginning Cash Balance			
3/5/2026	(6,166.50)	Mosaic Staircase	-	(6,166.50)	Angelina Melicia Duckett
3/5/2026	(5,500.00)	Stairway project	-	(5,500.00)	McGrath Arts
3/12/2026	(45.00)	Public Art RFP posting	-	(45.00)	Artshow
3/12/2026	(35.00)	Public Art RFP posting	-	(35.00)	Art Call
4/16/2026	(28,280.00)	Stairway project	-	(28,280.00)	McGrath Arts
			-	-	
			-	-	
4/30/2026	2,678,534.81	Ending Cash balance	-	(40,026.50)	-
<i>Committed</i>	<i>7,920.00</i>	<i>Mural at Midtown Market (45K)</i>			
	<i>99,100.00</i>	<i>Tentative: Artful Benches</i>			
	<i>107,020.00</i>	<i>Total Committed</i>			
Available in Fund	\$ 2,571,514.81				



Public Art Advisory Committee Staff Report

Meeting Date: May 18, 2026

From: Maz Bozorginia, Public Works Director

Subject: Tulare to Santa Clara Stairway Project

Recommendation

Background

The Tulare to Santa Clara Stairway project will utilize a 10' wide city property to create a new stairway from midblock of dead-end Tulare St. at the upper end to Santa Clara St. at the lower end. Council, the Complete Streets Safety Committee, staff and the public have identified this unimproved steep property as a priority to install a stairway with handrail and bollard lighting. This will enhance safety for pedestrians, including youth and the elderly in Brisbane.

Staff applied for San Mateo County Transportation Authority (SMCTA) Bike/Ped grant funds in 2023 for the project and was successful in obtaining funds to complete the design initially funded by Council, and for construction funds for the project. Funded improvements will include concrete steps as well as a prefabricated steel stair section where required at the top, drainage, handrail and bollard lighting.

A water distribution pipeline and sewer main pipeline exist on this property, as the property was originally reserved for utilities. In much of the alignment, the water and sewer line will be under the planned stairway. Due to the age of the infrastructure, the water and sewer line require significant repair before the stairway can be constructed. Funds are not yet identified for this work.

Discussion

Opportunities for public art along this stairway, as we understand them, are on the concrete steps themselves, along the sides of the stairway with sculptures or the like (with consideration of existing utilities), and for modified handrails and lighting. Attached are the two plan sheets for the project, showing the lower part on the first sheet and the upper part on the second sheet. The attached photos show the existing condition of the property from several locations, as well as the solar powered bollard lighting planned and used at other stair installations over the past several years. These bollard-style lights comply with the recently passed Dark Sky ordinance regarding the downward direction of light, the lumens or amount of light, and the color temperature. These bollard lights are highly vandal-resistant and are not as subject to corrosion as past styles have been.

If there is consensus amongst the Committee to integrate art into this project, existing guidelines for public art procurement will be in effect, and the project will need to comply with the timeline for the construction work to not jeopardize grant funding. Public Works staff will be present to respond to questions at the meeting.

Fiscal Impact

Funds for the construction portion of the stairway project, except for the required utility repairs, are already covered by the SMCTA Bike/Ped grant funds in addition to a local match. Any integration of art would need to be covered by the Public Art fund, and funds to support this effort are available within the Public Art Fund (Fund 275).

Attachments

- 1. PHOTOS OF FUTURE TULARE TO SANTA CLARA STAIRWAY LOCATION 05 18 26
- 2. Plan and Profile with legend 05 18 26

City Manager Approval



Jeremy Dennis, City
Manager

5/13/26

PHOTOS OF FUTURE TULARE TO SANTA CLARA STAIRWAY LOCATION

Santa Clara St. – bottom of stairway



Lower portion of stairway



5/13/26

Midpoint of stairway looking up towards Tulare



Midpoint of stairway looking down toward Santa Clara St.



5/13/26

Upper part of stairway looking down toward Santa Clara St.



Upper part of stairway looking up towards Tulare St.



5/13/26

Stairway property just below Tulare St. looking up



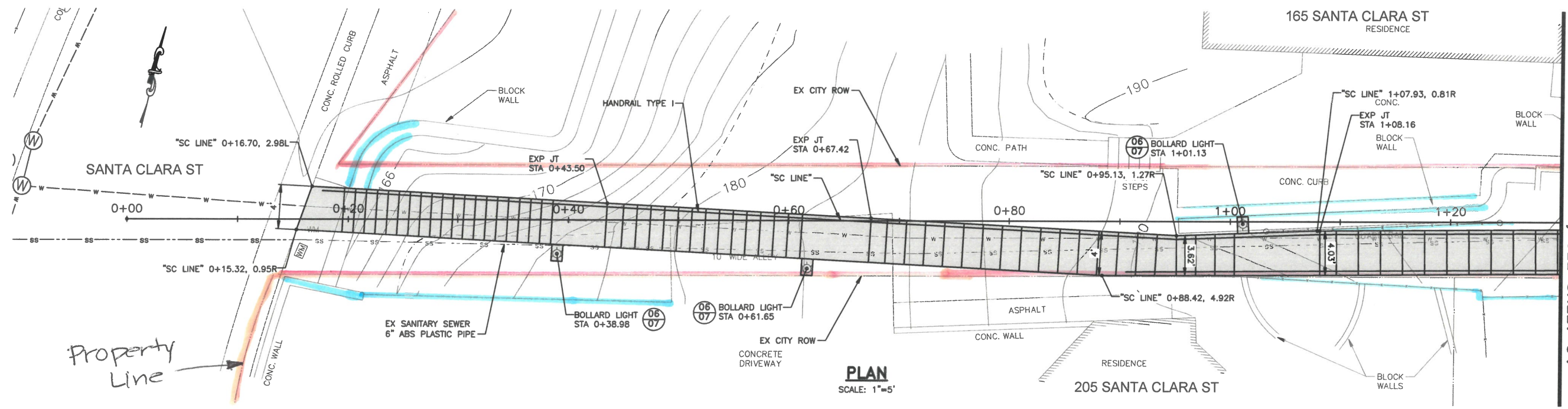
Top of stairway view from Tulare St.



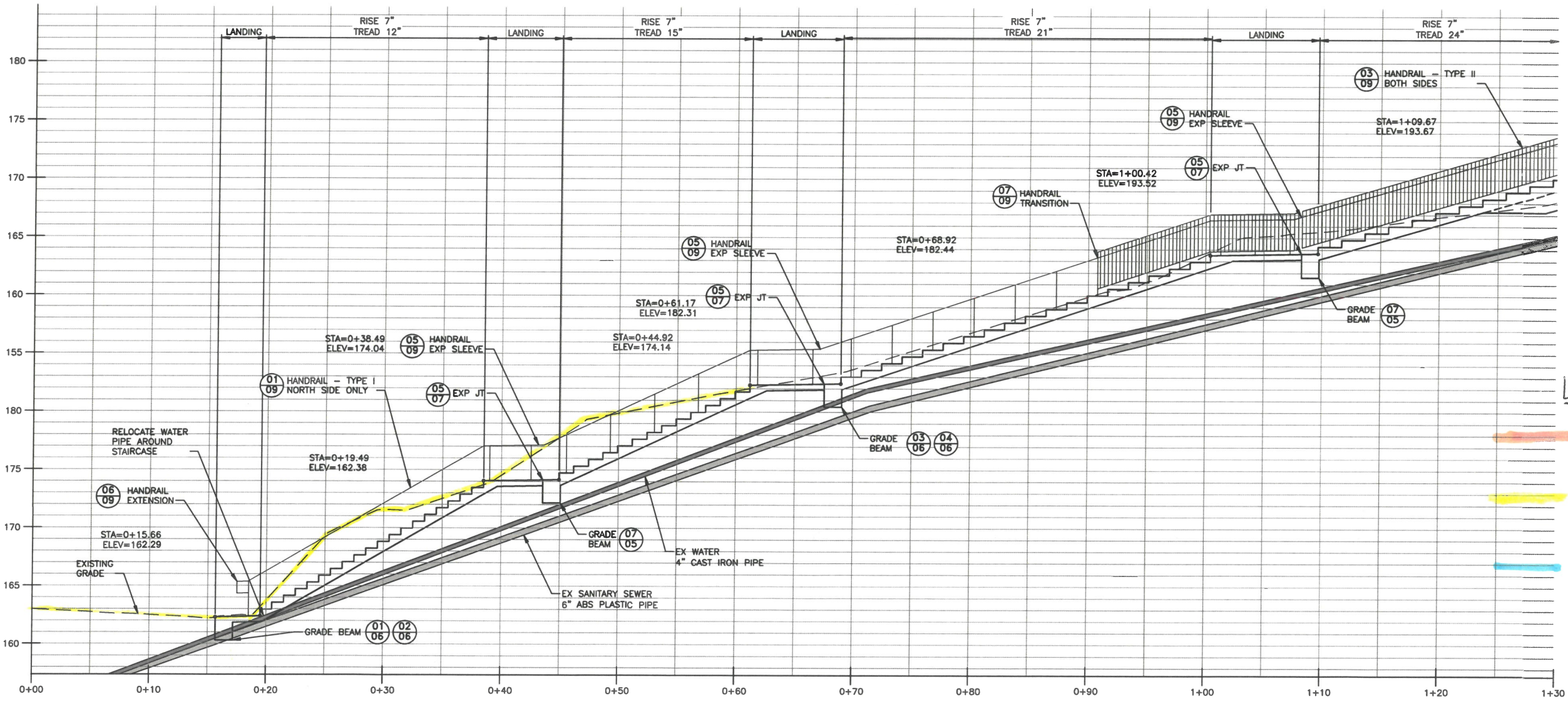
5/13/26

SOLAR POWERED BOLLARD PLANNED FOR STAIRWAY





PLAN
SCALE: 1"=5'



ELEVATION
SCALE: 1"=5'

LEGEND

- = property line
- = excavation required
- = walls, fence or railing

MATCH LINE, SEE SHEET 04

NO.	REVISIONS	DATE

SCALE: AS SHOWN
DRAWN: -
DESIGNED: -
APPROVED: -

NOT FOR CONSTRUCTION
 SUBMITTAL
 FOR CONSTRUCTION

PREPARED BY:
CSG CONSULTANTS, INC.
 550 PILGRIM DRIVE
 FOSTER CITY, CA 94404
 PHONE: (650) 522-2500
 FAX: (650) 522-2599
 EMPLOYEE-OWNED

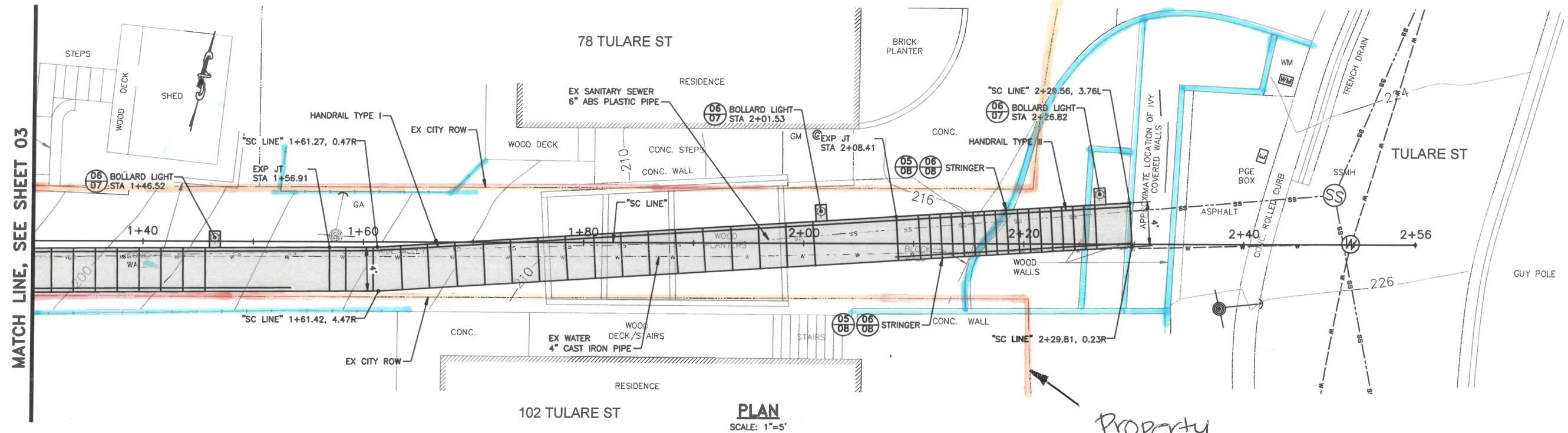
PREPARED FOR:
CITY OF BRISBANE
 ENGINEERING SERVICES DEPARTMENT
 BRISBANE, CALIFORNIA

TITLE:
**PEDESTRIAN WALKWAY
 SANTA CLARA ST TO TULARE ST**
 PLAN AND PROFILE

SHEET:
3 OF 10
 DATE: 03/18/25
 JOB#: 24.613

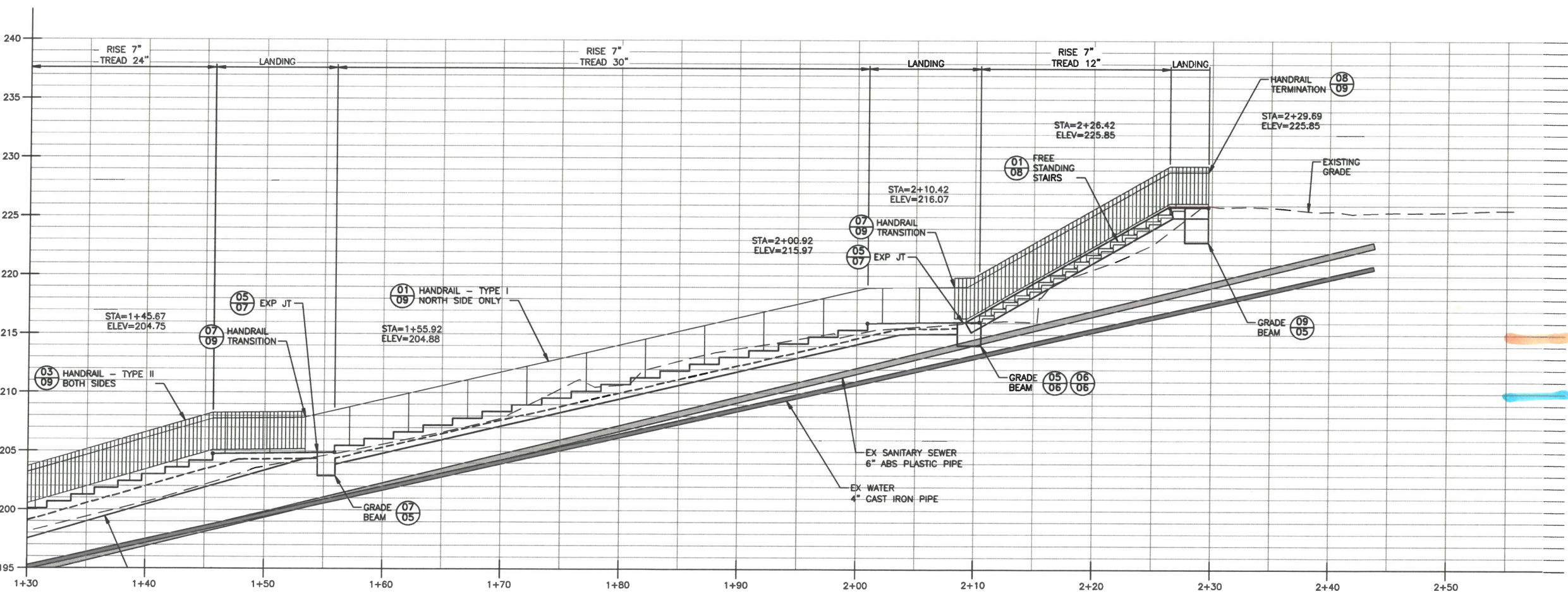


VERIFY SCALES: BAR SHOWN IS ONE INCH ON ORIGINAL DRAWING.
 IF NOT ONE INCH ON THIS SHEET, ADJUST SCALES ACCORDINGLY.



PLAN
SCALE: 1"=5'

Property Line



ELEVATION
SCALE: 1"=5'

LEGEND

- = property line
- = walls, fence or railing

MATCH LINE, SEE SHEET 03

NO.	REVISIONS	DATE

SCALE: AS SHOWN
DRAWN: []
DESIGNED: []
APPROVED: []

XXX SUBMITTAL FOR CONSTRUCTION

PREPARED BY: **CSG CONSULTANTS, INC.**
550 PILGRIM DRIVE
FOSTER CITY, CA 94404
PHONE: (650) 522-2500
FAX: (650) 522-2599

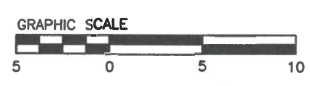
CSG CONSULTANTS
EMPLOYEE-OWNED

PREPARED FOR:
CITY OF BRISBANE
ENGINEERING SERVICES DEPARTMENT
BRISBANE, CALIFORNIA

TITLE: **PEDESTRIAN WALKWAY
SANTA CLARA ST TO TULARE ST**

PLAN AND PROFILE

SHEET: **4 OF 10**
DATE: 03/18/25
JOB#: 24.613



VERIFY SCALES: BAR SHOWN IS ONE INCH ON ORIGINAL DRAWING.
IF NOT ONE INCH ON THIS SHEET, ADJUST SCALES ACCORDINGLY.